



# MONTHLY MEMBERSHIP PROGRESS REPORT

District 2 T3

Results as of: 10/31/2017

GMT: JOE AL PICONE

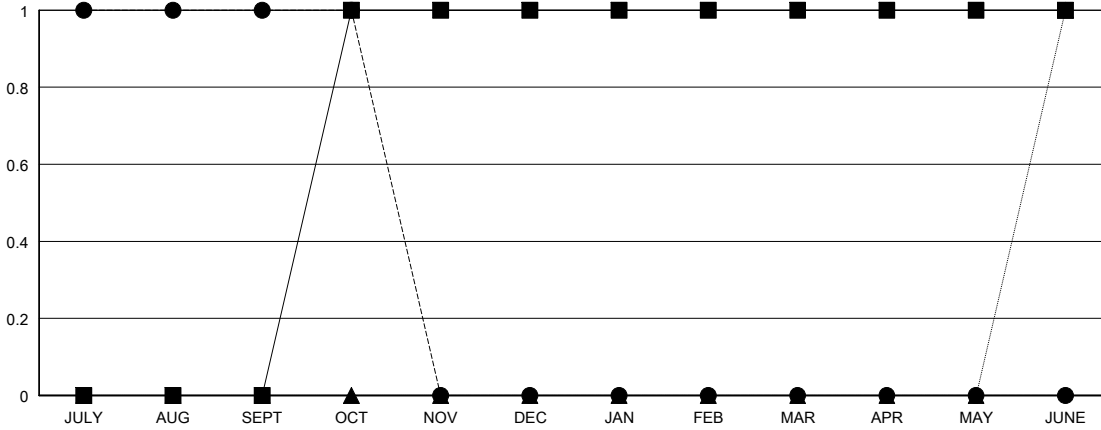
LOCATION TEXAS

GMT CA

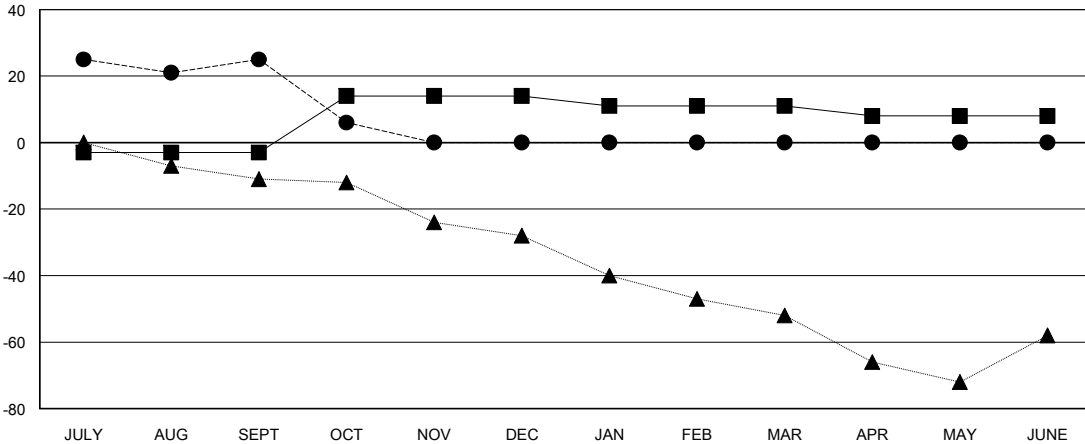
Clubs			
RESULTS FOR 2017-2018			
QUARTER	NEW CLUB GOAL	NEW CLUBS	DROPPED CLUBS
JULY/AUG/SEPT	0	1	0
OCT/NOV/DEC	1	0	0
JAN/FEB/MAR	0	0	0
APR/MAY/JUNE	0	0	0

Members			
RESULTS FOR 2017-2018			
QUARTER	MEMBER GROWTH NET GOAL	MEMBER GROWTH ACTUAL	DROPPED MEMBERS ACTUAL (including transfers)
JULY/AUG/SEPT	-3	80	49
OCT/NOV/DEC	17	9	27
JAN/FEB/MAR	-3	0	0
APR/MAY/JUNE	-3	0	0

GOALS AND ACTUAL NEW CLUBS CUMULATIVE



GOALS AND ACTUAL MEMBERS CUMULATIVE



DROPPED CLUBS: 0
------------------

14 CLUBS OF 33 ADDED 1 OR MORE NEW MEMBERS

GENDER DISTRIBUTION	
MALE	443 (59.46%)
FEMALE	302 (40.54%)
Women Percentage Fiscal Year Goal: 30%	

DROPPED MEMBERS	
DECEASED	4
CLUB CANCELLED	0
OTHER	72
<b>TOTAL</b>	<b>76</b>

[CLICK HERE FOR CUMULATIVE MEMBERSHIP DATA](#)

TOTAL FAMILY UNIT MEMBERS	104
FAMILY MEMBERS PAYING HALF DUES	54